

# South Africa

- heritage haven -



A close-up photograph of a lion's face, showing its mouth open as if roaring or speaking. The lion's fur is a mix of golden-brown and reddish-brown tones. The background is dark and out of focus.

We have ...

the lion's share.



Natural



Cultural



The Greater St. Lucia Wetland  
Park



**Robben Island**



# The Cradle of Humankind



**Largest  
Estuarine  
System  
in the  
Southern**




**Hemisphere  
Canyons**



**Coral  
Reefs**



**Dune  
Forests**



**North Eastern  
coast of KwaZulu-Natal**

# Robben Island



# Nelson Mandela

**27 years in jail**



... triumph over

hardship

adversity



An aerial photograph of Cape Town, South Africa, and Robben Island. The city is visible at the base of the flat-topped Table Mountain in the background. The ocean is a deep blue, and Robben Island is a dark, elongated island in the foreground. A green arrow points from the top left towards the city, and an orange arrow points from the bottom left towards Robben Island.

Cape Town

Robben  
Island

Southern Africa - where humans first evolved



The Cradle of Humankind





Northern Province

Pietersburg

Mpumalanga

Mmabatho

Pretoria  
Gauteng

Johannesburg

North West

Welkom

Free State

Upington

Kimberly

Kwazulu/Natal

Bloemfontein

Pietermaritzburg

Northern Cape

Durban

Umtata

Eastern Cape

Western Cape

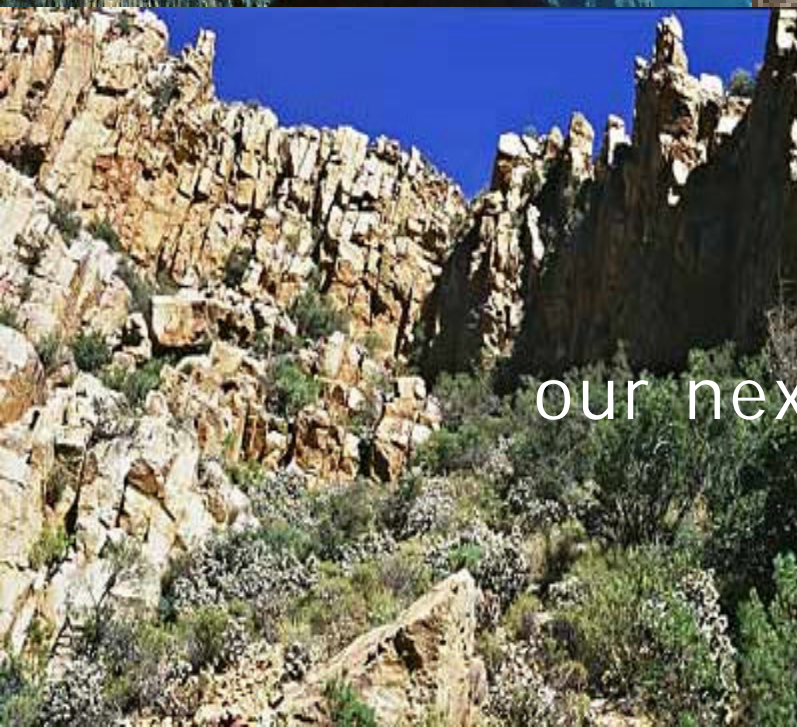
Grahamstown

East London

Cape Town

Port Elizabeth

# Ukahlamba: Drakensberg ...



our next World Heritage site.



1875 PELLA 1975



Pella's People ...

a vanishing culture?





# NAMA DWELLINGS





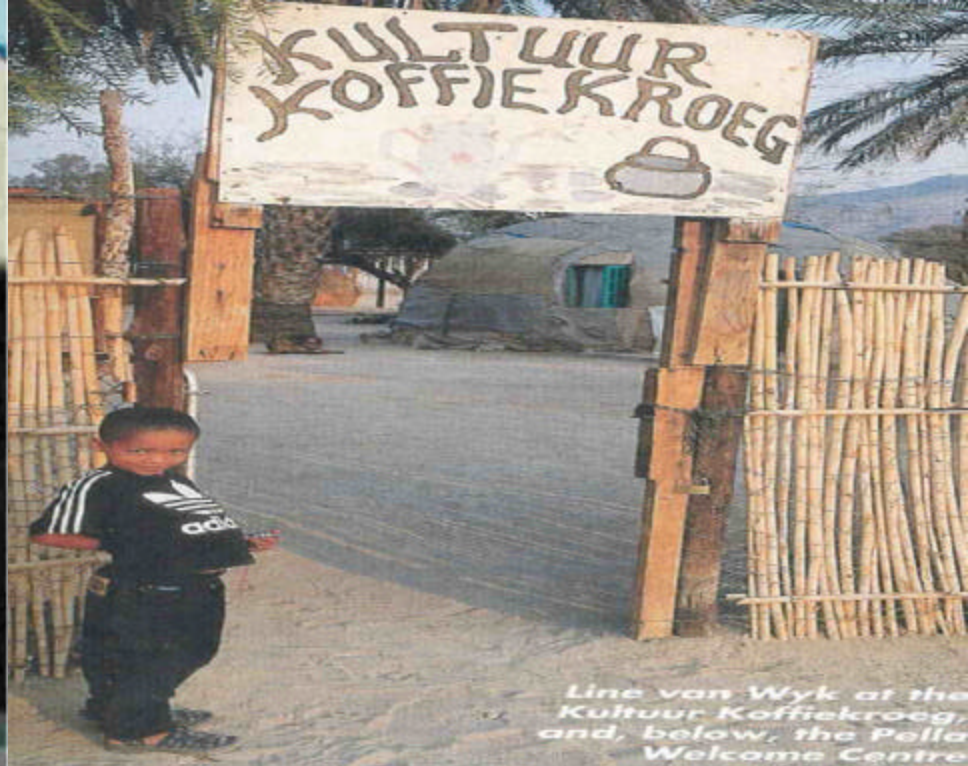
- **Maximum Volume**
- **Spacious feeling**
- **Cool in dry weather**
- **Watertight roof**



Excellent ventilation







Line van Wyk at the  
Kultuur Koffiekroeg  
and, below, the Pella  
Welcome Centre



...a vanishing language?



“ihaus ‘ty Gariep ge=huis !nâ”



# Cuisine



# Ashbush



*Body lotion*

*Fire wood*

*Shelter*

*Soap*

*Shampoo*

*Brooms*

*Medicine*





**Ā Nama  
delicatessen**

...and Leandra

...and Sumey

Nama dancing













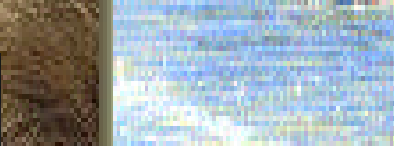


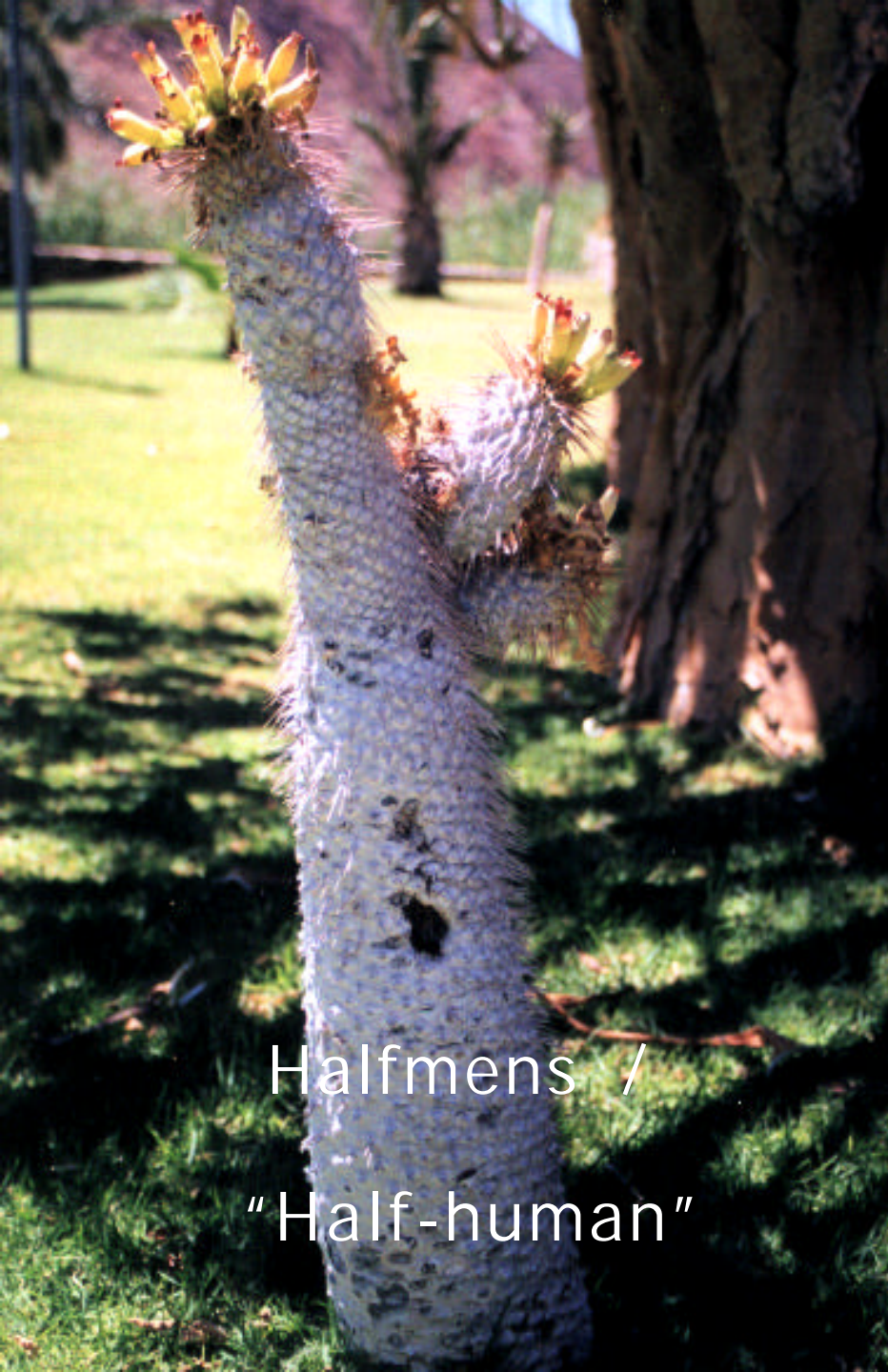


13 900 date palms

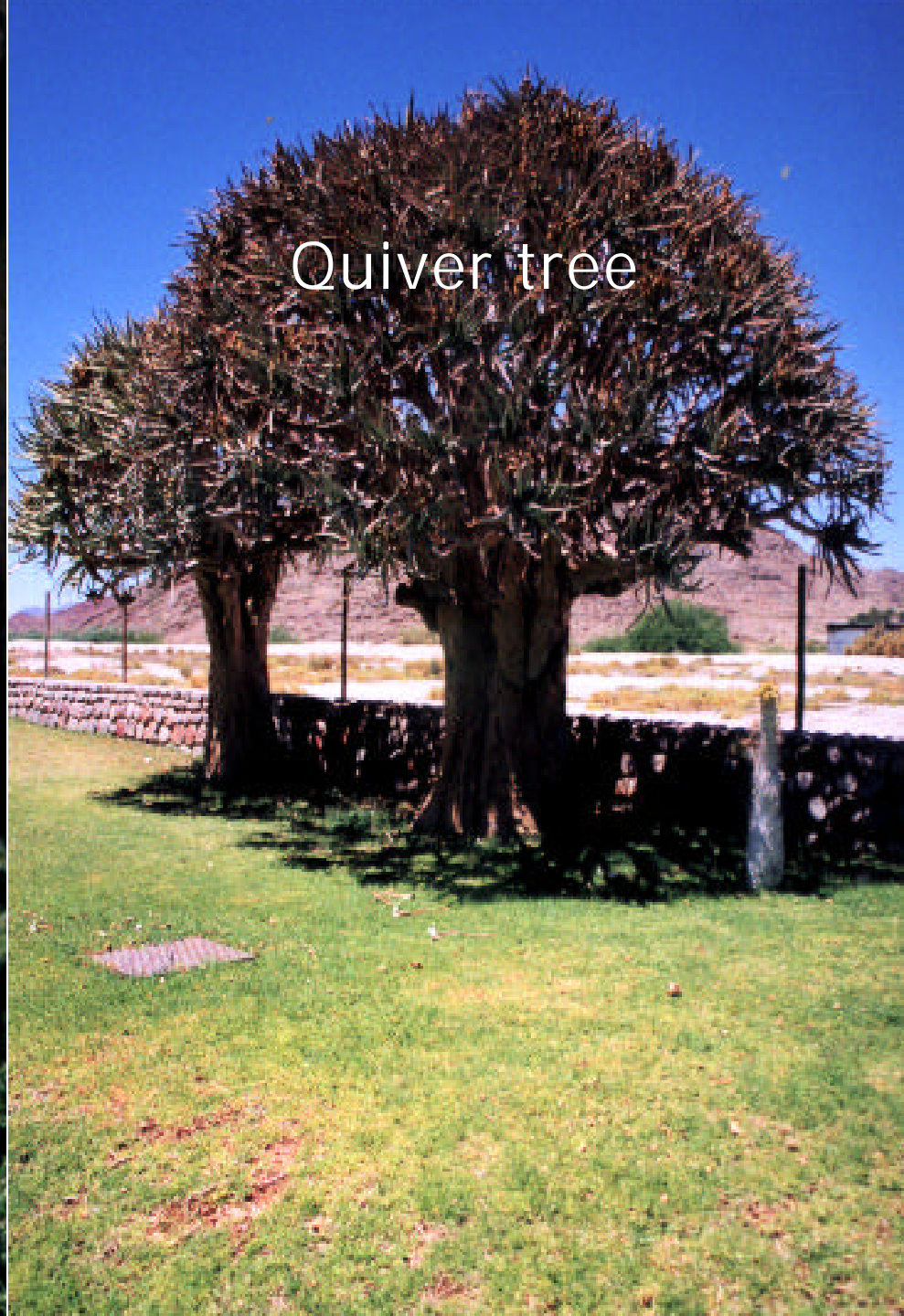


**"Sweets of the  
desert"**





Halfmens /  
"Half-human"



Quiver tree





...a vanishing culture?

We have not finished yet!



Thank you,  
Lufthansa !

